

## **JINDAO RAISED ACCESS FLOOR SYSTEMS**

— 600 x 600 mm Woodcore Access Panels & Understructures

**Jindao**

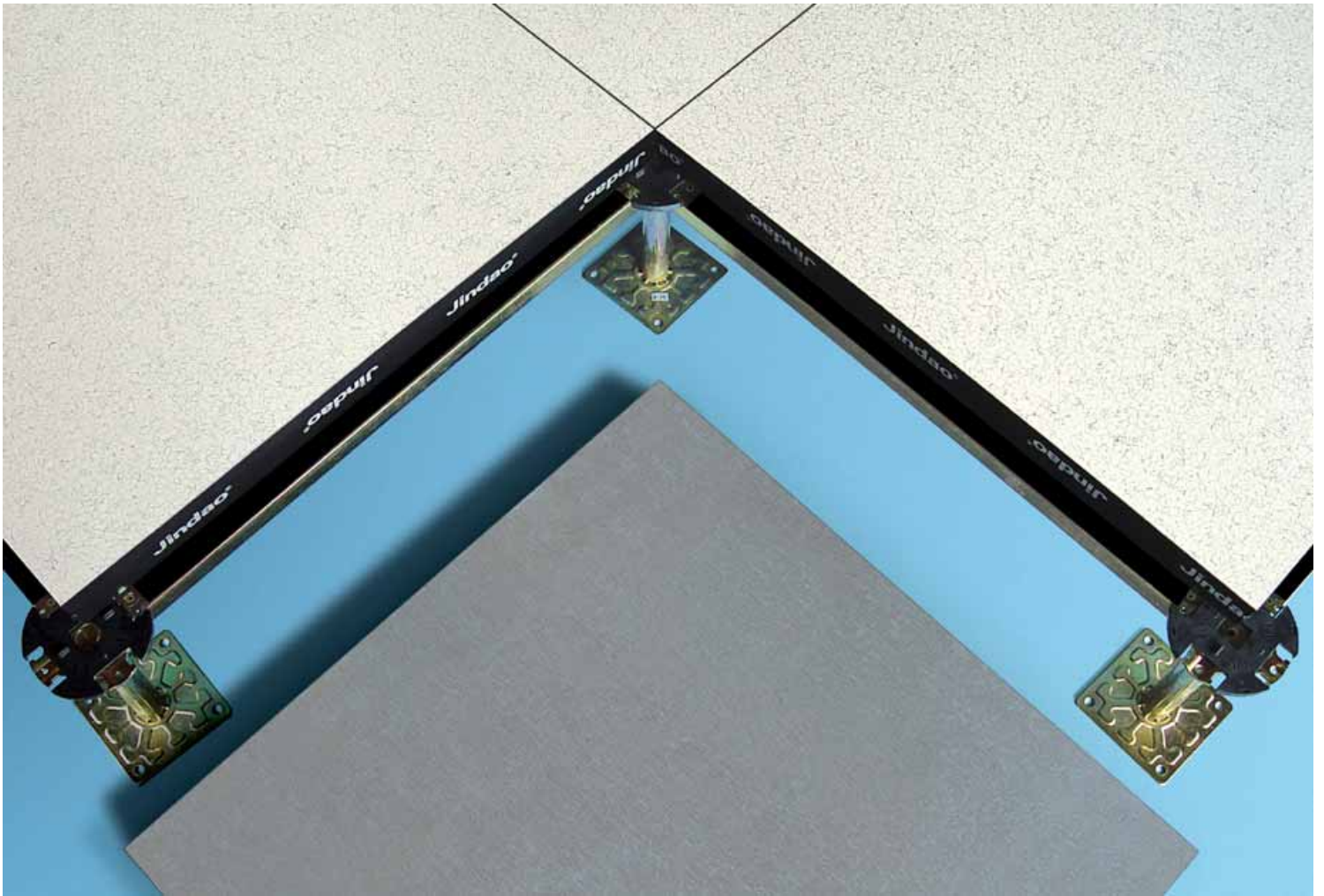
# WOODCORE ACCESS PANEL

The modular square access panel consists of the following parts:

- 38mm thickness high-density particle board panel, with galvanized steel reinforcement underneath
- Particle board panel is encapsulated by 4 pieces of black PVC strips along the side of the panel
- Covering: Vinyl/Linoleum, HPL, Steel

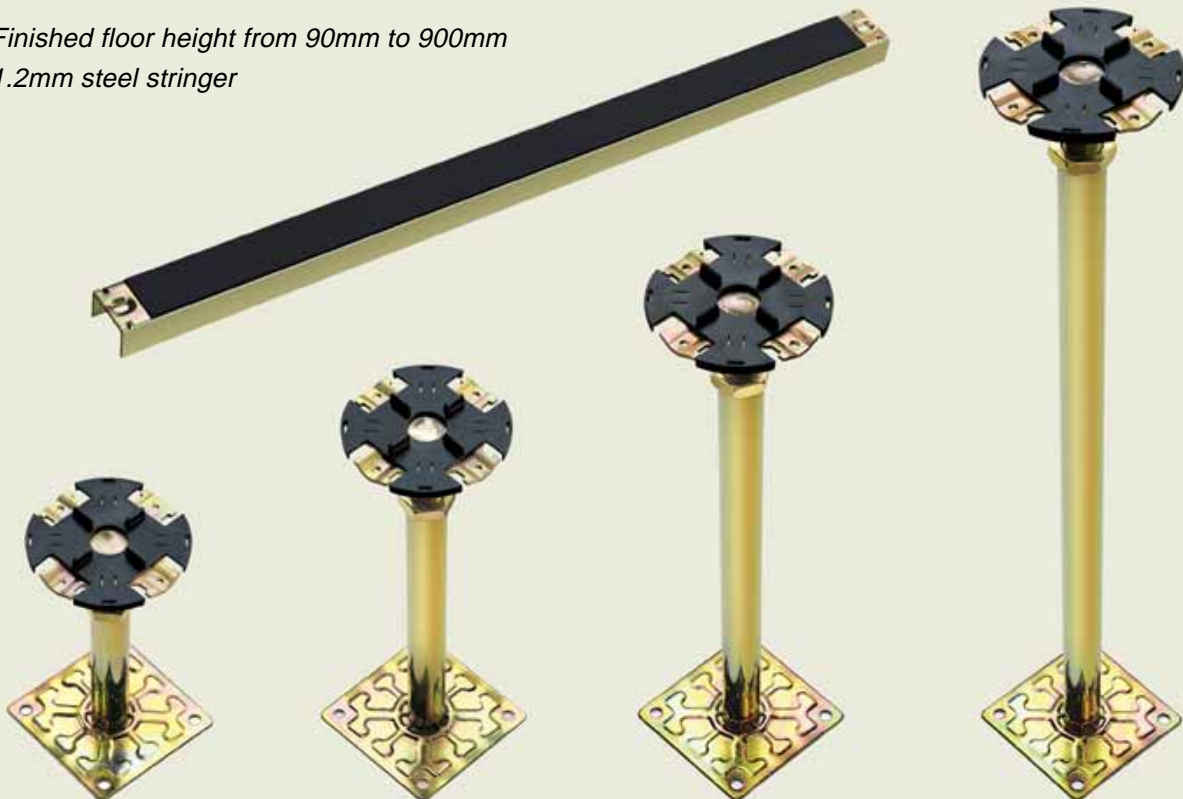
Panel Type	Panel Grade (EN 12825)	Dynamic Load (kN)	Concentrated Load (kN)	Uniform Load (kN/m <sup>2</sup> )	Fire Protection (DIN 4102)	General Construction (Top/Middle/Bottom)
WP1000V	Heavy	4.5	5.5	20	B1	Vinyl/Chipboard/steel
WP1000H	Heavy	4.5	5.5	20	B1	HPL/Chipboard/steel
WP1000B	Heavy	4.5	5.5	20	B1	Steel/Chipboard/steel





## PEDESTAL & STRINGER

- ▮ Finished floor height from 90mm to 900mm
- ▮ 1.2mm steel stringer



# FINISHES FOR RAISED ACCESS FLOORS

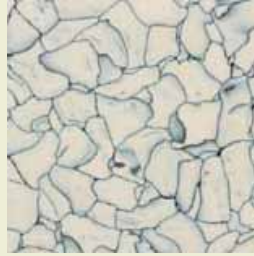
## VINYL

*LG Conductive Vinyl*  
2.0/3.0 mm

*Electrical resistance:*  
 $2.5 \times 10^4 - 1 \times 10^6$  ohm



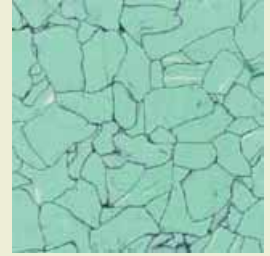
VINYL6101



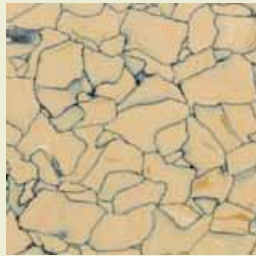
VINYL601



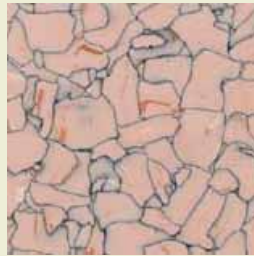
VINYL6111



VINYL6081



VINYL6071



VINYL6131

## Antistatic HPL

*Jindao Antistatic HPL*  
1.2/1.6 mm

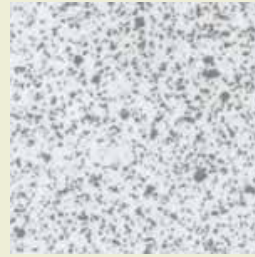
*Electrical resistance:*  
 $1 \times 10^8 - 1 \times 10^{11}$  ohm



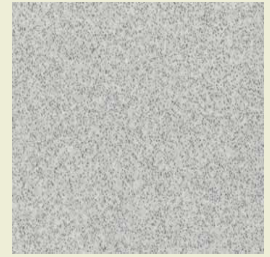
HPL2010



HPL2010-6



HPL2103



HPL2158



HPL2208



HPL2069

## JINDAO FLOORS, INC.

ADDR: Xiyou Town, Laizhou City, Shandong Province, China 261418

TEL: +86 535 2743446

FAX: +86 535 2743449

URL: <http://www.jindaofloors.com/>

EMAIL: [info@jindaofloors.com](mailto:info@jindaofloors.com)